

steri-cartridge 3000

cartridge piercing system

The inventor of the first sterile one step ear piercing system is proud to introduce our **cartridge loaded** ear piercing system...

**Ear piercing
safe enough
for the next
millennium!**

New!

steri-cartridge 3000 ear piercing instrument

Improved comfort, control and piercing performance...

- Spring activated ear piercing – always exactly the right pressure for piercing.
- **Cartridge loaded** – technician never touches the cartridge or piercing studs.
- Ear is pierced and earring back installed in one operation.
- Comfortable handle and grip for accurate piercing.
- Trigger activated piercing for precise positioning.
- Smooth operation for easy alignment.
- Starter kit available.
- Lifetime warranty.

steri-cartridge 3000 ear piercing cartridge

The ultimate in hygiene...

- Cartridge can be loaded while still inside its sterile blister for ultimate hygiene – technician never has to touch the cartridge or stud when loading or unloading the instrument.
- Each sterile cartridge contains one stud and one clasp for simple one step loading.
- Everything that touches the ear is pre-sterilized.
- Sold in pairs for economical inventory control.
- Single stud can be used without compromising the sterility of the second stud.
- Completely disposable cartridge cannot be reloaded.
- Point of stud always visible for accurate piercing.
- One piece cartridge operates smoothly – may be repeatedly advanced and retracted prior to firing, for accurate alignment of stud and clasp.

Product code 94023

**41 styles
of starter
studs to
choose
from...
including
pure
14 karat
gold!**

New!



Roman Research, Inc., 800 Franklin Street, Hanson, MA 02341
www.romanresearch.com

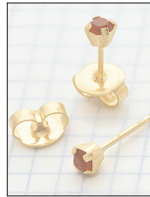
(800)-225-8652
June 2005



steri-cartridge 3000 sterile earring studs

Regular 24 karat gold electroplate tiffanies

simulated birthstones



January 94002



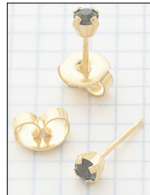
February 94003



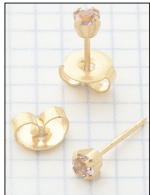
March 94004



April 94005



May 94006



June 94007



July 94008



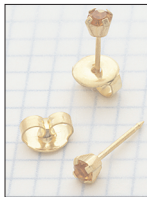
August 94009



September 94010



October 94011



November 94012



December 94013

Pure 14 karat gold tiffanies

simulated birthstones



January 94028



February 94029



March 94030



April 94031



May 94032



June 94033



July 94034



August 94035



September 94036



October 94037



November 94038



December 94039

Regular 24 karat gold electroplate



Regular Ball 94000



Regular Star 94016



Regular Heart 94017



Regular Cubic Zirconia 94014



Regular Simulated Pearl 94018

Pure 14 karat gold



Regular Ball 94024



Large Ball 94026



Regular Cubic Zirconia 94040

Mini 24 karat gold electroplate



Mini Ball 94019



Mini Cubic Zirconia 94021

Cartridge can be inserted in instrument while still inside its sterile blister for ultimate hygiene – technician never has to touch the cartridge or stud when loading or unloading the instrument.



Regular simulated Pearl 94042

Regular polished stainless steel



Regular Ball 94001



Regular Cubic Zirconia 94015

Mini polished stainless steel



Mini Ball 94020



Mini Cubic Zirconia 94022

Pure 14 karat white gold



Regular Ball 94025



Regular Cubic Zirconia 94041



Roman Research, Inc., 800 Franklin Street, Hanson, MA 02341
www.romanresearch.com

(800)-225-8652
June 2005

