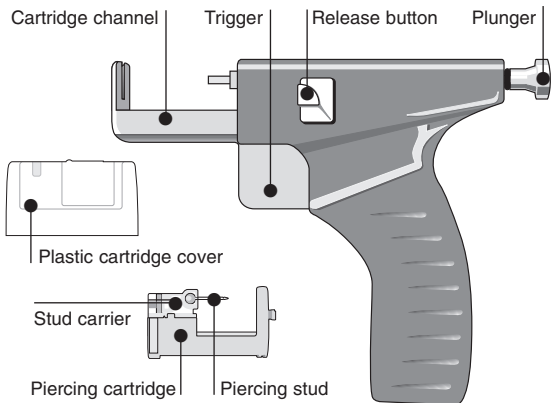


steri-cartridge3000

cartridge piercing system



first prepare customer



Carefully clean each ear lobe with alcohol pad. Mark the exact spot on each lobe with a non-toxic marking pen. Be careful to avoid hard cartilage in the upper ear lobe and make sure left and right marks are even.



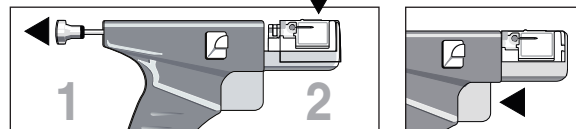
If you are piercing in the cartilage area of the ear, special care must be taken during both the piercing and the after-piercing care.

- When piercing the cartilage around the edge of the ear, with customers who have very thick or heavily curled cartilage, you must pull the cartilage slightly to

“unroll” it. This is to ensure that the piercing instrument can be properly positioned.

- Whenever piercing through any cartilage area of the ear, you must take care to ensure the instrument is held perpendicular to the surface of the ear.
- Alert your client that the healing of the cartilage area will take somewhat longer than the lobe area.

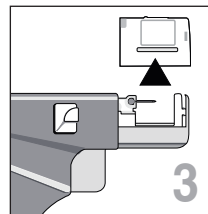
second load instrument



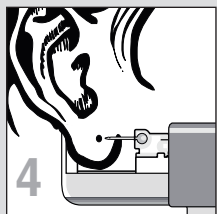
1- To install the piercing cartridge, pull plunger back until it locks.

2- Place clear plastic cover with the cartridge inside down into sliding channel until it snaps firmly into place. Gently squeeze trigger until cover contacts instrument.

Do not release trigger.

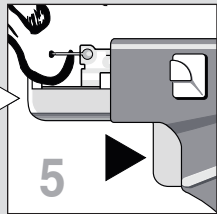


3- Lift clear plastic cover off and set aside for later. **Do not touch** any exposed part of the stud itself.

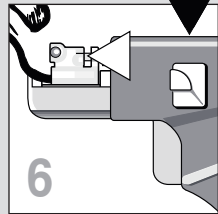


third piercing the ear

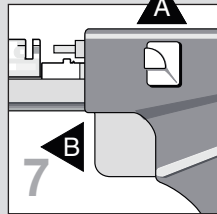
4- Align point of stud with the mark on the ear.



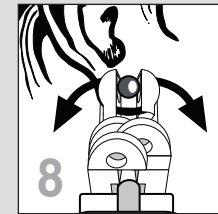
5- Gently squeeze trigger all the way until it stops. The point of the stud may touch the ear, depending on the thickness of the ear lobe.



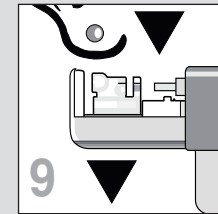
6- When ready to pierce, press the release button down with thumb. The plunger will snap forward and drive the stud through the ear, automatically installing the clasp.



7- **A** Take thumb off of release button. **B** Release trigger and the cartridge will slide forward away from the plunger. This allows the stud carrier to pop open enough to release the stud (see fig. 8).



8- When the trigger is released, the stud carrier will spread apart, releasing the stud.



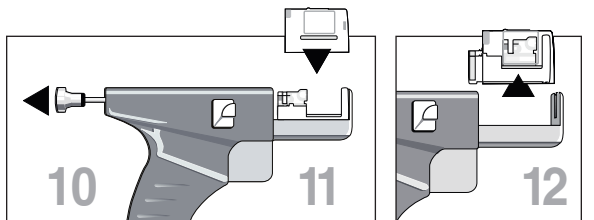
9- Once the stud is clear, pull the instrument down away from the ear.

fourth remove cartridge

10- To remove the cartridge, pull the plunger back again until it locks.

11- Align stud symbol (○) on plastic cartridge cover over cartridge with point facing front of instrument. Press the plastic cover down over the cartridge all the way, until it snaps onto the cartridge.

12- Pressing firmly on the sides of the plastic cover, lift the cartridge up out of the channel. Release the plunger



www.romanresearch.com

Roman Research, Inc., 800 Franklin Street, Hanson, MA 02341
phone 1.781.447.3411 fax 1.781.447.0995
toll-free 1.800.225.8652

SC3000-11.05

e-mail customerservice@romanresearch.com