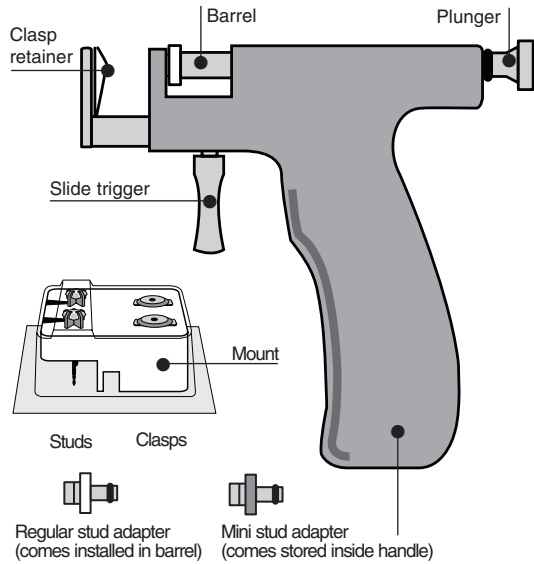


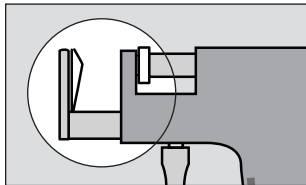
steri-stud2500

universal ear piercing system



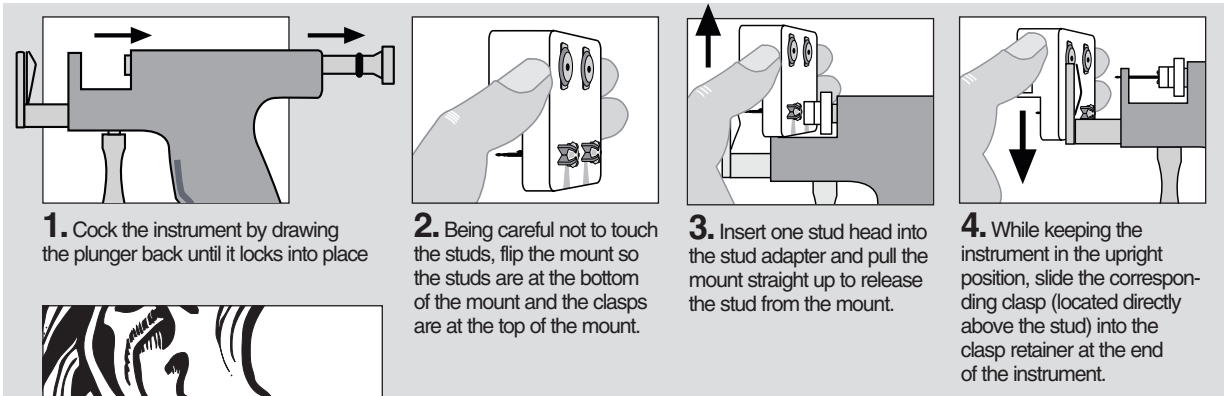
When you first receive your instrument, the regular adapter is already in the plunger of the instrument. If you are piercing with a Mini stud, you must remove the regular adapter and install the Mini adapter (stored in the handle of the instrument).

Before and after each piercing, thoroughly cleanse the entire area of the clasp retainer by wiping with a cotton ball or swab moistened with Misty® ear care gel or alcohol.



Roman Research, Inc
 800 Franklin Street, Hanson, MA 02341
 phone 1.781.447.3411 fax 1.781.447.0995
 toll-free 1.800.225.8652

e-mail customerservice@romanresearch.com



1. Cock the instrument by drawing the plunger back until it locks into place

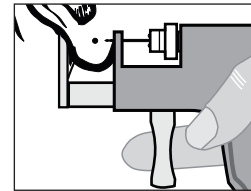
2. Being careful not to touch the studs, flip the mount so the studs are at the bottom of the mount and the clasps are at the top of the mount.

3. Insert one stud head into the stud adapter and pull the mount straight up to release the stud from the mount.

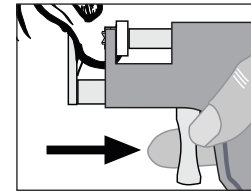
4. While keeping the instrument in the upright position, slide the corresponding clasp (located directly above the stud) into the clasp retainer at the end of the instrument.



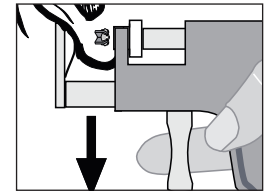
5. Carefully cleanse each ear lobe with Misty®. Mark the exact spot on each lobe with a non-toxic marking pen. Be careful to avoid hard cartilage in the upper ear lobe and make sure left and right marks are even. Have the customer check and approve the marks before proceeding with the piercing. The customer should not touch their ears after cleansing.



6. Place the ear between the clasp retainer and the stud, carefully aligning the point of the stud with the mark on the ear. While maintaining proper alignment, slowly squeeze the trigger until the ear is held securely by the instrument.



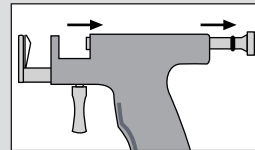
7. Keeping the proper alignment, continue to squeeze the trigger until it releases the plunger. In less than 1/10th of a second, the ear will be pierced and the clasp will be automatically installed on the stud with the proper spacing.



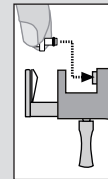
8. Release trigger and carefully pull instrument straight down from the ear. Repeat this procedure for additional ear piercings.

SS2500-11.05

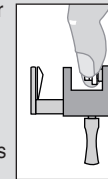
changing stud adapter



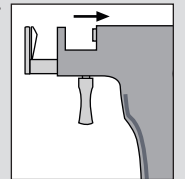
Hold the trigger in and pull the plunger all the way back past the cocked position. The adapter will dislodge itself from the plunger enough to be easily removed.



With the plunger in the cocked position, press the desired adapter into the front of the plunger as far as it will go.



Once the adapter is properly seated in the plunger, pull the trigger to return the plunger to the uncocked position.



If you are piercing in the cartilage area of the ear, special care must be taken during both the piercing and the after-piercing care. When piercing the cartilage around the edge of the ear, with customers who have very thick or heavily curled cartilage, you must pull the cartilage slightly to “unroll” it. This is to ensure that the piercing instrument can be properly positioned. Whenever piercing through any cartilage area of the ear, you must take care to ensure the instrument is held perpendicular to the surface of the ear. Alert your client that the healing of the cartilage area will take somewhat longer than the lobe area. **Cartilage area is dark area shown at left.**